

General Description

The AL5817 is an 8-terminal adjustable linear LED driver-controller offering excellent temperature stability and output current capability. It works with a wide input voltage range from 4.5V to 60V. With an external LED driving power device, its internal power dissipation is minimized compared with traditional linear LED drivers. This makes it ideal for medium to high current LED circuits.

The AL5817 has internal output drive capability up to 15mA, which enables it to drive external bipolar transistors or MOSFETs. It also provides the capability to drive longer LED chains with low drop out voltage and multiple LED channels.

VSET pin is used to directly set output current feedback level. Using a resistor divider between REF pin and VSET pin, the output current can be set. Additionally, the use of an NTC resistor allows the creation of an accurate and configurable thermal foldback behavior.

The AL5817 provides an LED-open detection feature through its VFAULT pin. If VFAULT is brought lower than 2.5V (by any one of the multiple LED channels going open) the AL5817's output will go low turning off the external transistors. The device will recover when the open condition is removed.

An enable pin ENB is available to externally turn on and off the LEDs. An input voltage higher than 2V disables the device and external transistor drive. This ability of ENB to turn off the external transistors also allows low frequency PWM dimming of the

LED current by adding PWM control signal on ENB pin.

AL5817 is available in the thermally enhanced MSOP-8EP package.

Applications

- Linear LED Driver
- LED Signs
- Instrumentation Illumination
- Refrigerator Lights

Key Features

- Wide Input Voltage Range from 4.5V to 60V;
- Wide Input Voltage Range from 4.5V to 60V;
- Configurable LED Current Setting;
- 3% Reference Voltage Tolerance;
- Low Temperature Drift;
- 15mA Output Drive Capability for MOSFET or Bipolar Transistor;
- LED Open Protection Detected by VFAULT Pin;
- LED Thermal Foldback Configured by VSET;
- Over Temperature Protection (OTP);
- UVLO Protection;
- PWM Dimming Realized through VFAULT pin or ENB pin.

AL5817EV1 Specifications

| Parameter | Value |
|----------------|-----------------|
| Input Voltage | 4.5VDC to 60VDC |
| LED Current | 1A |
| Number of LEDs | 1~17pcs |
| XY Dimension | 63mm x 40mm |



Figure 1: Top View

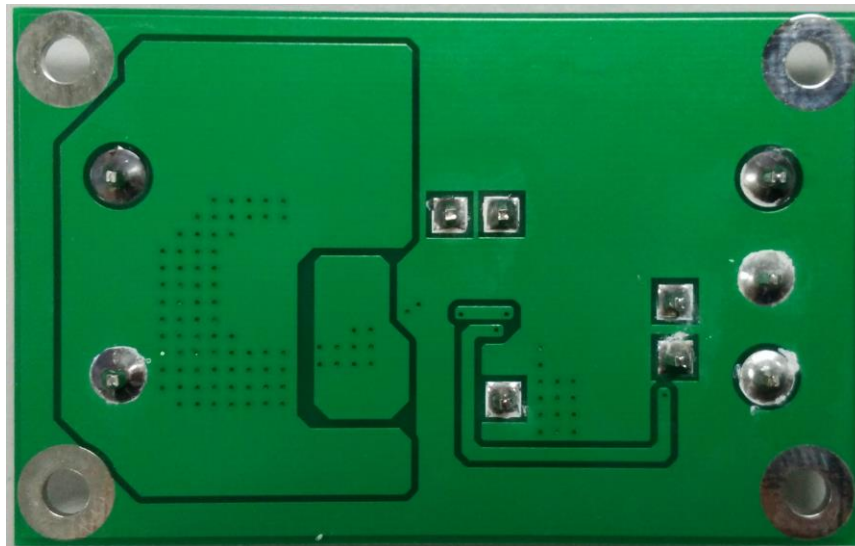


Figure 2: Bottom View

Connection Instructions

Power Supply Input: 4.5~60V_{DC} (VIN, GND);

For LED-open detection operation: add a 0805 0 ohm resistor on location RJ;

For PWM dimming operation: add PWM dimming signal to the ENB pin;

Device enabling signal input (ENB, GND): Floating and low/ON, high/OFF.

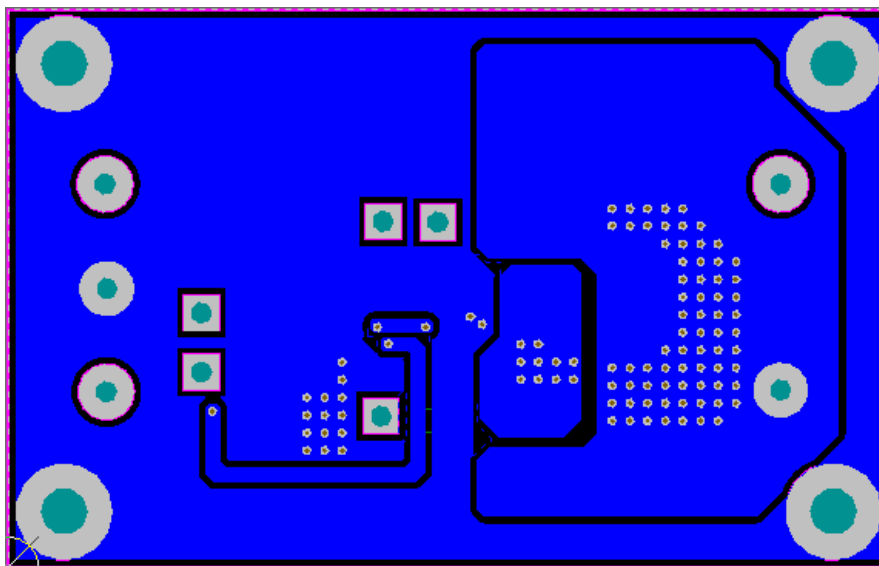


Figure 5: PCB Board Layout Bottom View

Bill of Material

| # | Item | Description | Package |
|----|------|--|----------|
| 1 | C1 | Ceramic Cap,10uF/100V, X7R | 1210 |
| 2 | C2 | NC | NC |
| 3 | C3 | Ceramic Cap,0.1uF/100V, X7R | 1206 |
| 4 | C4 | Ceramic Cap,1nF/16V, X7R | 0603 |
| 5 | C5 | Ceramic Cap,1nF/16V, X7R | 0603 |
| 6 | C6 | Ceramic Cap,1nF/16V, X7R | 0603 |
| 7 | Q1 | FZT651TA, 60V/3A, NPN Transistor, Diodes Inc | SOT223 |
| 8 | R1 | SMD Resistor, 51K, 5%, 1/8W | 0805 |
| 9 | R2 | SMD Resistor, 51K, 5%, 1/8W | 0805 |
| 10 | R3 | SMD Resistor, 2.2K, 5%, 1/8W | 0805 |
| 11 | R4 | SMD Resistor,1K, 5%, 1/8W | 0805 |
| 12 | R5 | SMD Resistor, 0R, 5%, 1/8W | 0805 |
| 13 | R6 | SMD Resistor, 100K, 5%, 1/8W | 0805 |
| 14 | RJ | NC | NC |
| 15 | R7 | SMD Resistor, R820, 1%, 1/4W | 1206 |
| 16 | R8 | SMD Resistor, R820, 1%, 1/4W | 1206 |
| 17 | R9 | SMD Resistor, R620, 1%, 1/4W | 1206 |
| 18 | R10 | SMD Resistor, R910, 1%, 1/4W | 1206 |
| 19 | D1 | 1N4148, SOD123, Diodes Inc | SOD123 |
| 20 | U1 | AL5817, Diodes Inc | MSOP-8EP |

Quick Start Guide

1. By default, the LED current of evaluation board is preset at 1A.
2. Ensure that the DC source is switched OFF or disconnected before soldering or connecting.
3. Connect the anode wire of external LED string to LED A of the evaluation board.
4. Connect the cathode wire of external LED string to LED K of the evaluation board.
5. Connect two DC line wires to the VIN and GND terminals on the evaluation board.
6. Ensure that the area around the board is clear and safe, and preferably that the board and LEDs are enclosed in a transparent safety cover.
7. Turn on the main switch. LEDs string should light up with LEDs.

LED current setup

The LED current is set by the reference voltage at the emitter/drain voltage of the LED driving transistor. This reference voltage is determined by the resistor R1 and R2. On the demo board, the VSET voltage is preset to 0.2V.

Then the output current for LED strings can be calculated by:

$$I_{OUT} = V_{VSET} / R_{SENSE}$$

On the board, the R_{SENSE} consists of R7, R8, R9, R10; the effective resistance is 0.2 ohm, so the output current is 1A.

The LED driver's LED current behavior under different ambient or LED temperatures can be configured by using NTC for R2 shown in Figure 6.

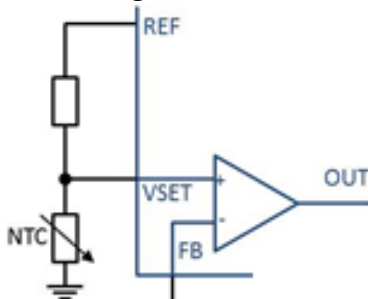


Figure 6: Thermal Fold Back Circuit Basing on NTC

LED-open detection function

This demo board is preset with no LED-open detection function. If this function is needed, change the demo board with the following action:

- 1) A 0 ohm SMD resistor should be added on location RJ;
- 2) Differential voltage between input and output should be higher than 2.7V to ensure VFAULT pin function working normally.

● VFAULT

The AL5817 detects open conditions on the collector/drain of the external transistor driving the LEDs using the VFAULT pin, see Figure 7.

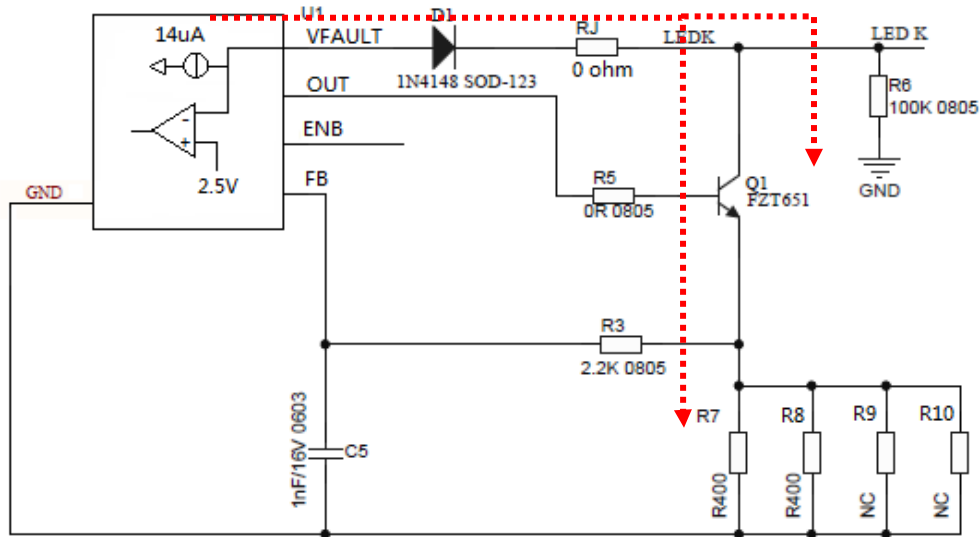


Figure 7: VFAULT configuration

If the LED string becomes open, VFAULT pin will be pulled down by the power bipolar or MOSFET below its internal 2.5V threshold. This condition triggers an output disable condition causing OUT to go low, turning off the external MOSFET/BJT. A resistor (R6, 100K) is needed to keep the VFAULT signal low during a fault condition. A 100k will keep this node low. When the fault condition is fixed and VFAULT pin rises above 2.63V the device will operate normally.

System Performance

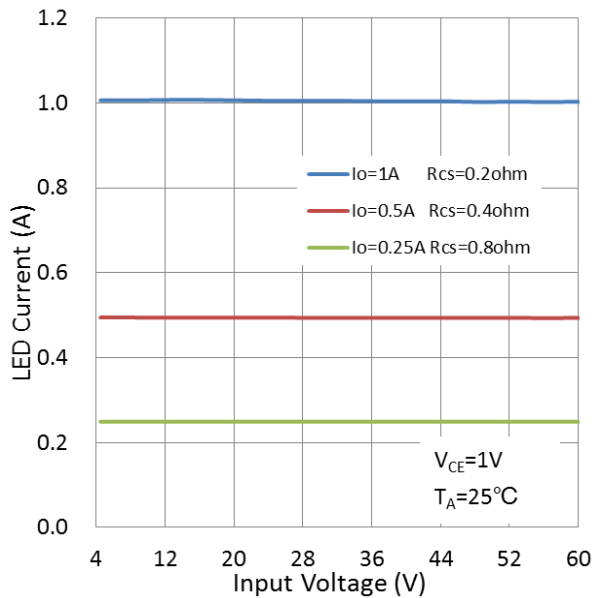


Figure 8: LED current VS input voltage

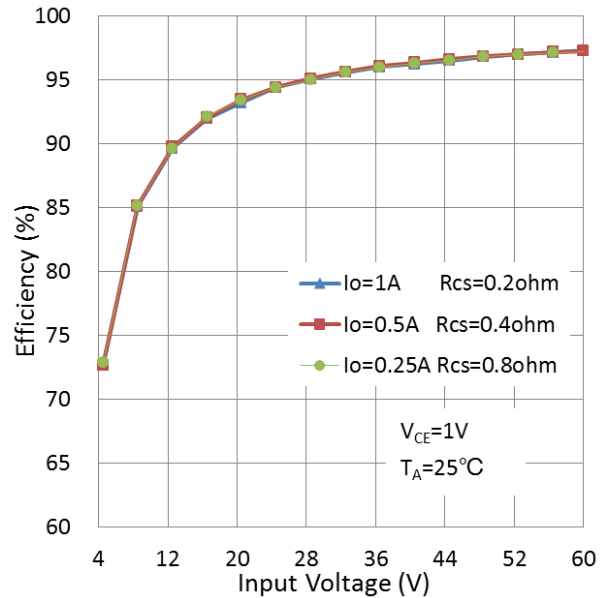


Figure 9: Efficiency VS input voltage

Dimming curve

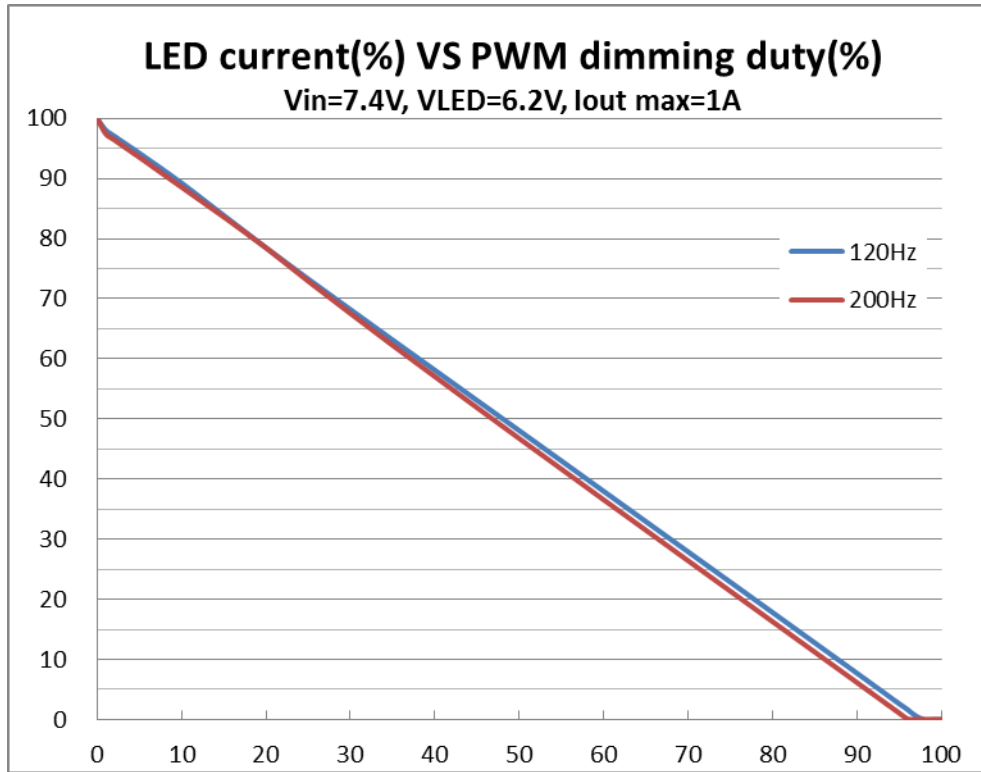
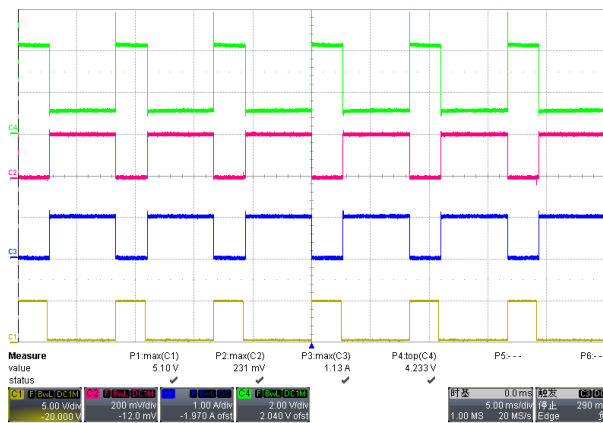


Figure 10: Dimming Curve

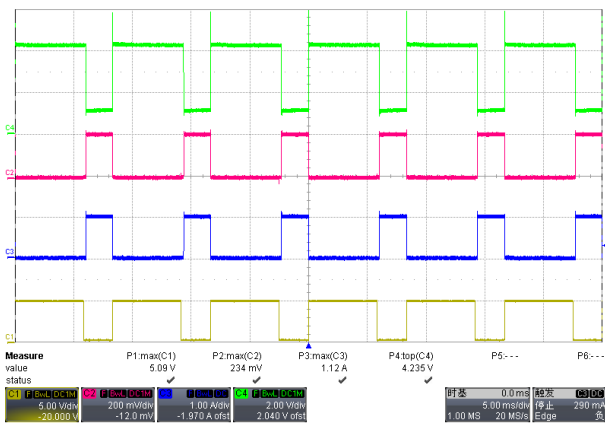
Dimming waveform

PWM **FB** **I_{LED}** **V_{LED_K}**



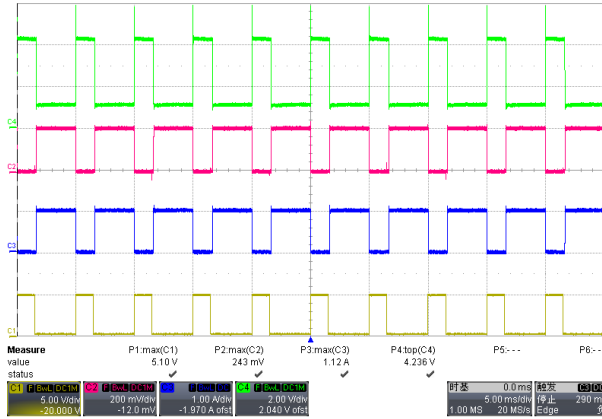
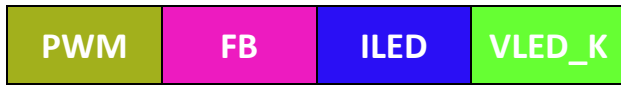
Frequency=120Hz, duty=30%

Figure 11: Dimming waveform (1)



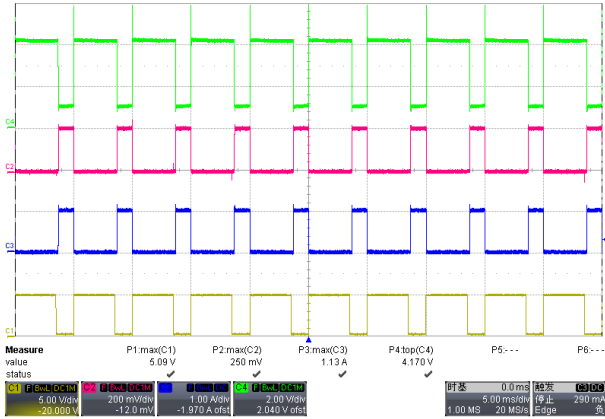
Frequency=120Hz, duty=70%

Figure 12: Dimming waveform (2)



Frequency=120Hz, duty=30%

Figure 13: Dimming waveform (3)



Frequency=120Hz, duty=70%

Figure 14: Dimming waveform (4)

LED-Open detection Waveforms:

Test condition: input 9.85V dc; output 7.05V 2S4P LEDs/1A.

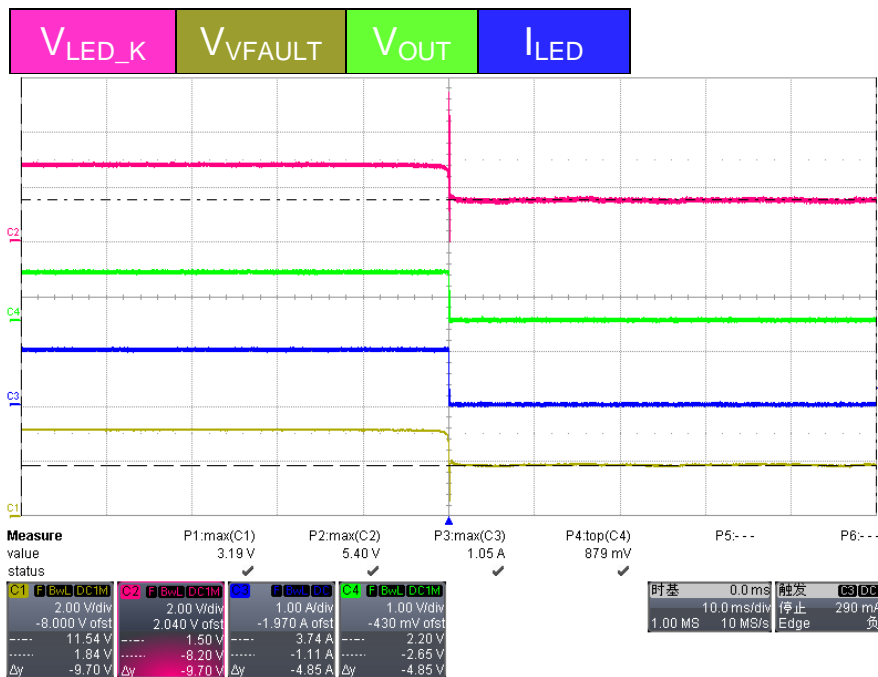


Figure 15: LED-Open Detection

Turn ON:

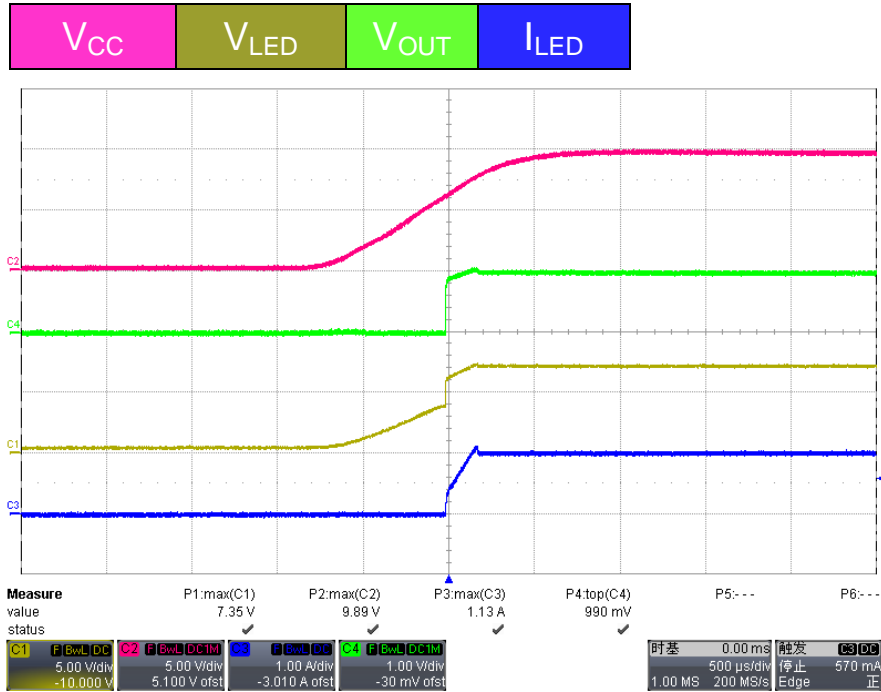


Figure 16: Turn ON (1)

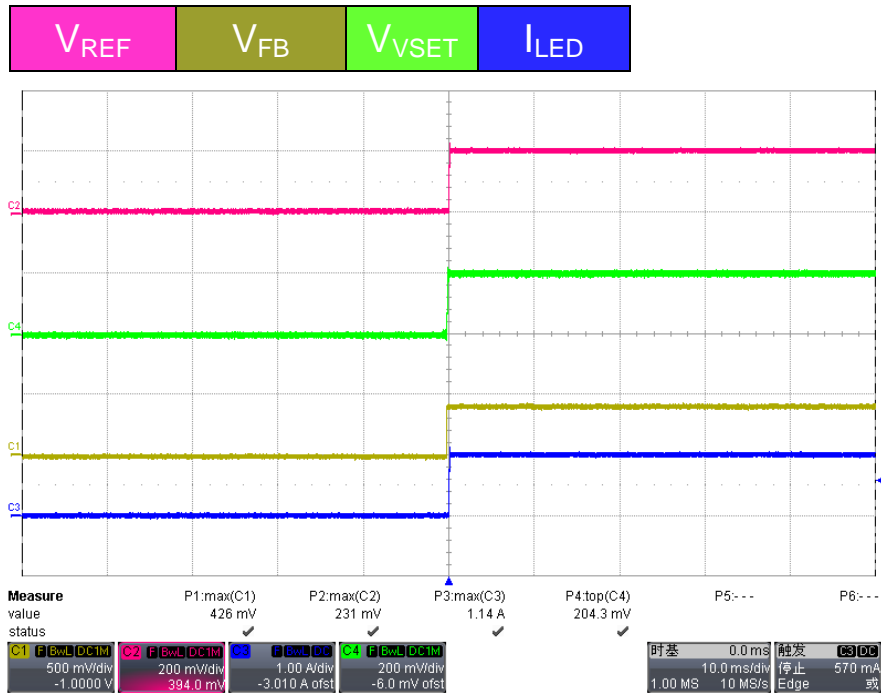


Figure 17: Turn ON (2)

Turn OFF:

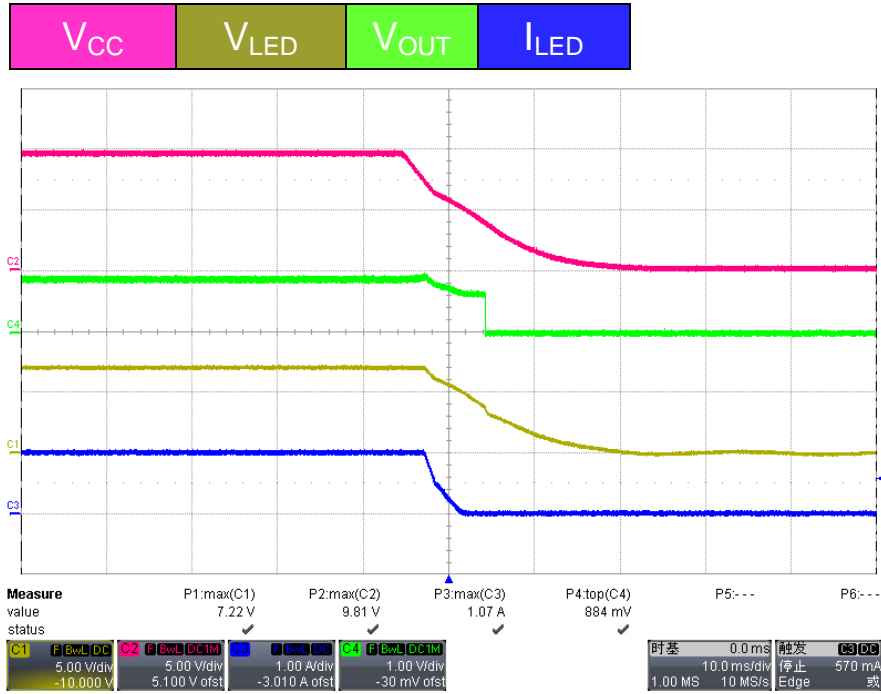


Figure 18: Turn OFF (1)

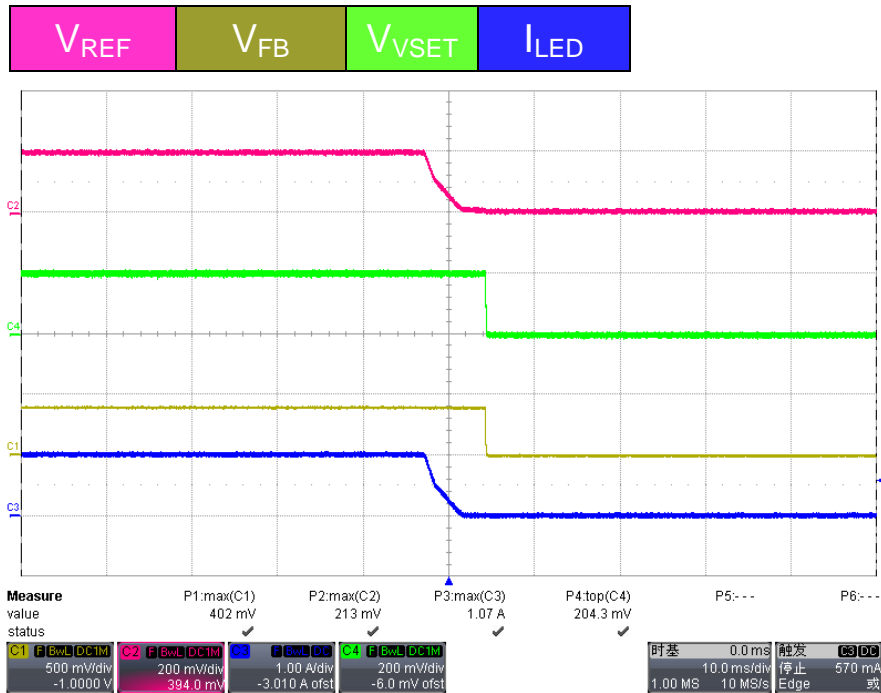


Figure 19: Turn OFF (2)

IMPORTANT NOTICE

DIODES INCORPORATED MAKES NO WARRANTY OF ANY KIND, EXPRESS OR IMPLIED, WITH REGARDS TO THIS DOCUMENT, INCLUDING, BUT NOT LIMITED TO, THE IMPLIED WARRANTIES OF MERCHANTABILITY AND FITNESS FOR A PARTICULAR PURPOSE (AND THEIR EQUIVALENTS UNDER THE LAWS OF ANY JURISDICTION).

Diodes Incorporated and its subsidiaries reserve the right to make modifications, enhancements, improvements, corrections or other changes without further notice to this document and any product described herein. Diodes Incorporated does not assume any liability arising out of the application or use of this document or any product described herein; neither does Diodes Incorporated convey any license under its patent or trademark rights, nor the rights of others. Any Customer or user of this document or products described herein in such applications shall assume all risks of such use and will agree to hold Diodes Incorporated and all the companies whose products are represented on Diodes Incorporated website, harmless against all damages.

Diodes Incorporated does not warrant or accept any liability whatsoever in respect of any products purchased through unauthorized sales channel.

Should Customers purchase or use Diodes Incorporated products for any unintended or unauthorized application, Customers shall indemnify and hold Diodes Incorporated and its representatives harmless against all claims, damages, expenses, and attorney fees arising out of, directly or indirectly, any claim of personal injury or death associated with such unintended or unauthorized application.

Products described herein may be covered by one or more United States, international or foreign patents pending. Product names and markings noted herein may also be covered by one or more United States, international or foreign trademarks.

LIFE SUPPORT

Diodes Incorporated products are specifically not authorized for use as critical components in life support devices or systems without the express written approval of the Chief Executive Officer of Diodes Incorporated. As used herein:

A. Life support devices or systems are devices or systems which:

1. are intended to implant into the body, or
2. support or sustain life and whose failure to perform when properly used in accordance with instructions for use provided in the labeling can be reasonably expected to result in significant injury to the user.

B. A critical component is any component in a life support device or system whose failure to perform can be reasonably expected to cause the failure of the life support device or to affect its safety or effectiveness.

Customers represent that they have all necessary expertise in the safety and regulatory ramifications of their life support devices or systems, and acknowledge and agree that they are solely responsible for all legal, regulatory and safety-related requirements concerning their products and any use of Diodes Incorporated products in such safety-critical, life support devices or systems, notwithstanding any devices- or systems-related information or support that may be provided by Diodes Incorporated. Further, Customers must fully indemnify Diodes Incorporated and its representatives against any damages arising out of the use of Diodes Incorporated products in such safety-critical, life support devices or systems.

Copyright © 2017, Diodes Incorporated

www.diodes.com